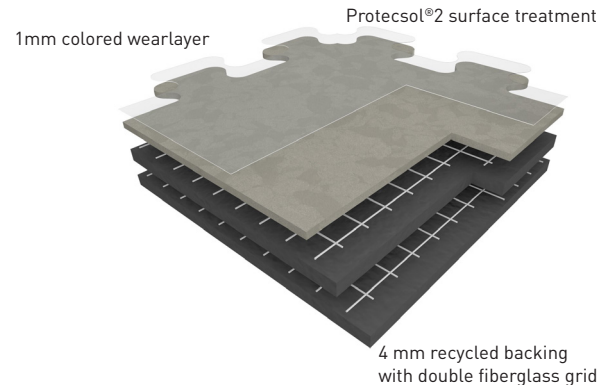




ATTRACTION

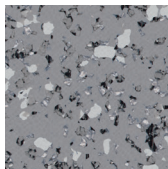
ATTRACTION is a 5mm coloured, multilayered, interlocking resilient tile featuring dovetail joints, making it ideal for quick renovations over existing subfloors such as concrete, VCT, ceramic tiles, and asbestos tiles. Its product construction includes a 1mm wear layer made with 100% pure coloured vinyl chips pressed at high pressure. The tile is reinforced with double fiberglass grids surrounding the interlayer on a thick, 100% recycled backing. Additionally, ATTRACTION features the revolutionary Protocolsol®2 surface treatment, offering superior stain resistance, including against permanent markers, and enabling a no-wax, easy maintenance protocol.



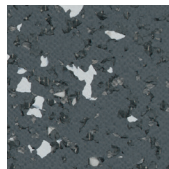
CONTRIBUTE TO A SUSTAINABLE ENVIRONMENT

- ▶ 100% REACH compliant
- ▶ 80% Recycled Content
- ▶ Extremely low VOC and allergen-free
- ▶ FloorScore® Certified

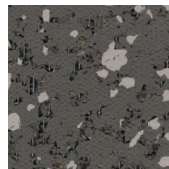
ATTRACTION NEOPOLIS DESIGN



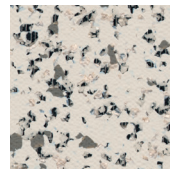
2740 HARLEM
SOFT



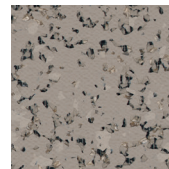
2741 BROOKLYN



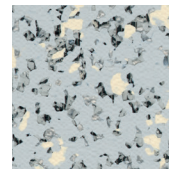
2742 TIME SQUARE



2743 CENTRAL
PARK

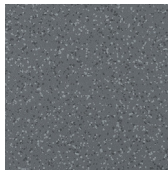


2744 QUEENS SOFT

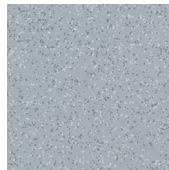


2745 PLAZA

ATTRACTION BRAZILIA DESIGN



3707 PARAIBA



3709 CEARA



4342 JUARA



8157 GOIAS



8386 BOA VISTA

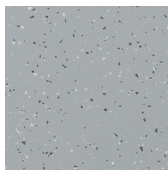


8577 AMAZONAS

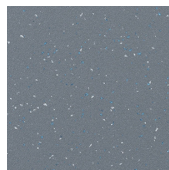


8736 RECIFE

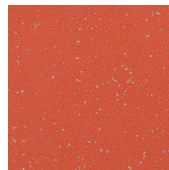
ATTRACTION INDIANA DESIGN



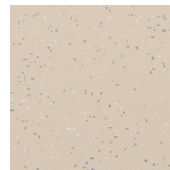
4003 TAO



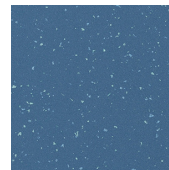
4004 PAGO



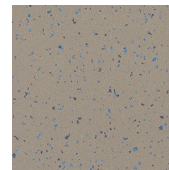
4146 MOHELI



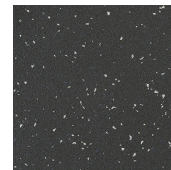
4343 TOKELAU



4476 WATTARU



8053 ANAMBAS



8837 SONGO

ATTRACTION OSMOZ DESIGN



4351 GREIGE



Removable

Protectsol® 2

FloorScore®

NEVER WAX
EASY MAINTENANCE

DESCRIPTION	STANDARD	REQUIREMENTS	TILES
PRODUCT DESCRIPTION			
Unique multilayered dovetailed tile made for quick renovations over existing floors such as VCT			
Gauge Total Thickness	ASTM F386	-	5.0mm (0.20")
Wearlayer Thickness	ASTM F410	-	1 mm - 100% pure colored vinyl chip pressed wearlayer
Surface Treatment		-	Protectsol@ 2 / No wax
Sizes	ASTM F386	-	25" x 25" (63.5 cm x 63.5 cm)
Weight	ASTM F410	-	1.53 lbs/ sqf (7460g/m ²)
PERFORMANCE			
Static Load (250 psi)	ASTM F970	≤ 0.005"	Meets Requirements
Slip Resistance	DIN 51 130	Class	R10
Coefficient of friction	ASTM D2047	-	0.68 (dry)
Indentation Hardness	ASTM D2240	-	95
Chemical & Stain Resistance	ASTM F925	-	Excellent
Castor Chair Test	ISO 4918 (EN 425)	< 0.02"	Meets Requirements
Fire rating	ASTM E648	-	Class 1
ENVIRONMENT HEALTH & SAFETY			
Anti viral activity (human coronavirus 229E)	ISO 21702	-	99.7% after 2h
Allergen-Free		-	100% Allergen-Free
Plant Certifications		-	ISO 14001, ISO 9001
Production Waste		-	100% Manufacturing Waste Recycled
End of Life		-	100% Recyclable
MATERIAL & RESSOURCES: BUILDING PRODUCT DISCLOSURE & OPTIMIZATION (BPDO)			
Sourcing of raw materials: Recycled Content	MR 4 LEED v3 Sourcing LEED v4	-	80 %
Restriction of Harmful Chemicals	Materials LEED v4	-	100% REACH Compliant
MATERIALS & RESSOURCES: INDOOR ENVIRONMENTAL QUALITY (IEQ)			
Indoor Air Quality/Low Emitting Materials	IEQ 4.3 LEED v3 Sourcing LEED v4	-	FloorScore® Certified
TVOC after 28 days	ISO 16000-6	-	<10 µg/m ³
WARRANTY/GARANTIE	10 year limited manufacturer warranty when installed in accordance with Gerflor's installation instructions		

* The implementation of an effective method is the best defense against infections.



**NO heavy metals,
CMR 1, or CMR 2**